



1435 NORTH WELLS STREET

CHICAGO, IL

NEW RETAIL
CONSTRUCTION
IN PRIME OLD TOWN
LOCATION

NEW RETAIL CONSTRUCTION IN PRIME OLD TOWN LOCATION

1435 N. WELLS STREET

Chicago, IL



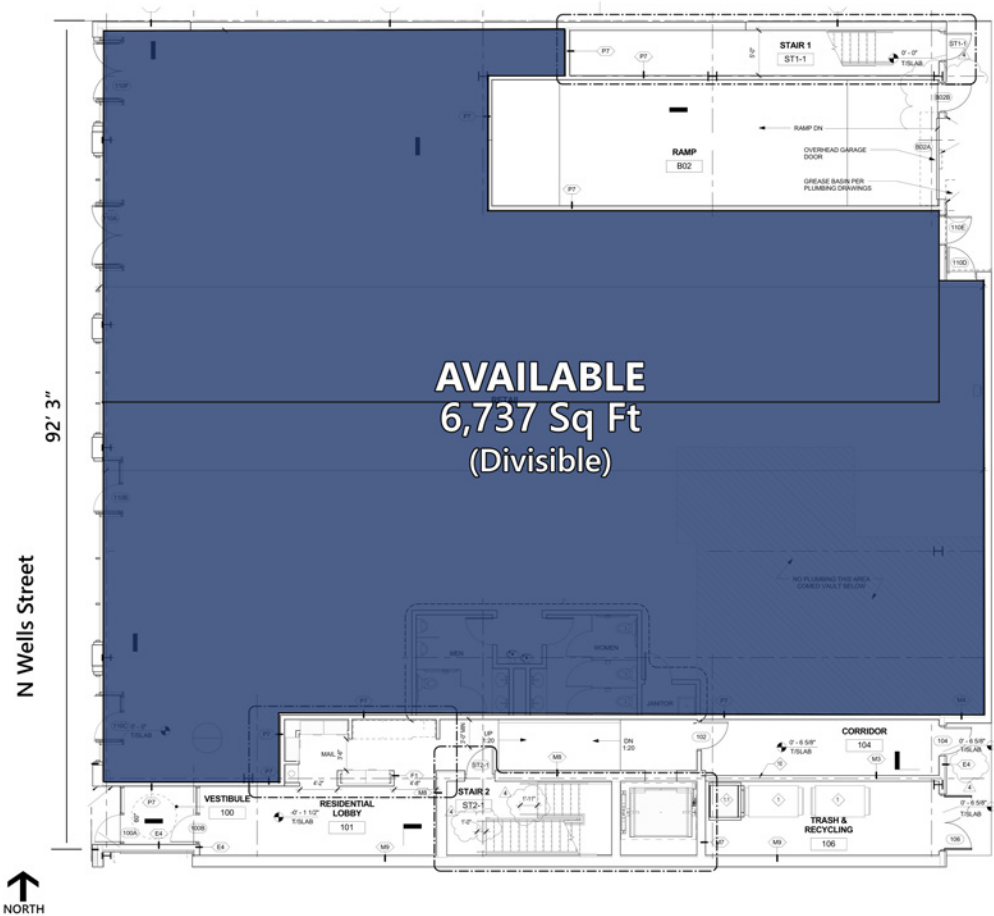
SPACE AVAILABLE

6,737 SF (Divisible)

SITE SUMMARY

- An exciting addition to Old Town’s Wells Street corridor with brand new retail space available for lease and 50 new apartments
- Surrounded by a dense, high-income residential population that continues to grow, historic architecture and great entertainment offerings, 1435 N. Wells provides new construction in a thriving retail and restaurant district
- Basement included
- 11 FT ceiling height
- Parking negotiable

POPULATION DENSITY	33,052	½ Mile
	76,097	1 Mile
	214,145	2 Mile
AVERAGE HH INCOME	\$122,571	½ Mile
	\$127,344	1 Mile
	\$126,439	2 Mile



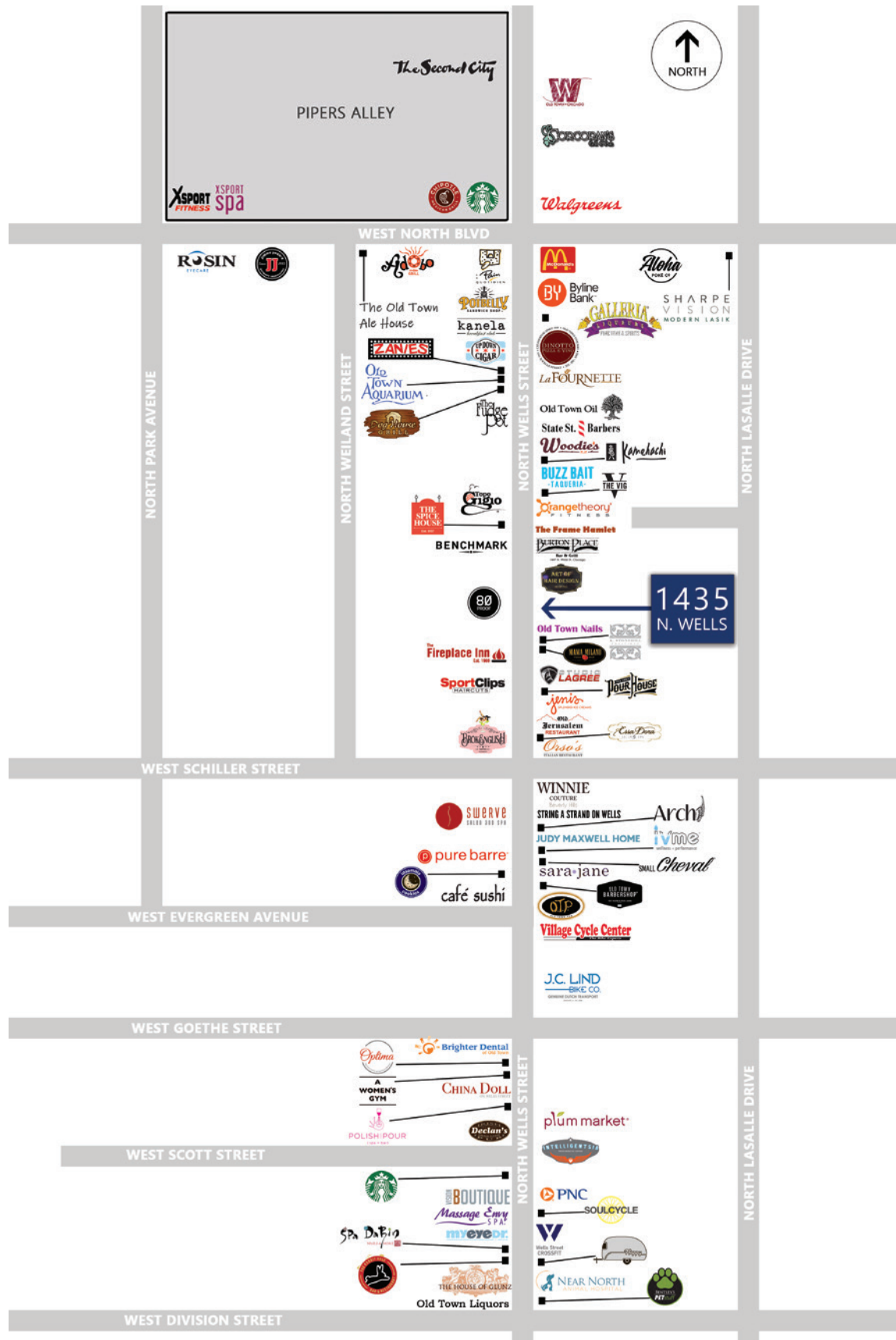
© 2019 A·R·C Real Estate. All information is from sources believed reliable, not independently verified, and thus subject to errors, omissions, and modifications such as price, listing, square footage, rates and commissions. All information, estimates and projections subject to change, market assumptions, unknown facts and conditions, and future potentialities. A·R·C Real Estate makes no express or implied representations or warranties, as facts and results may vary materially from all information, estimates and projections. All renderings presented are conceptual.

NEW RETAIL CONSTRUCTION IN PRIME OLD TOWN LOCATION

1435 N. WELLS STREET

Chicago, IL

MAP



CONTACT

Anthony Campagni
ac@arcgrp.com
(630) 908-5695

Cooper Annenberg
cooper@arcgrp.com
(630) 908-5697

Courtney Darin
courtney@arcgrp.com
(630) 908-5691

A·R·C
REAL ESTATE