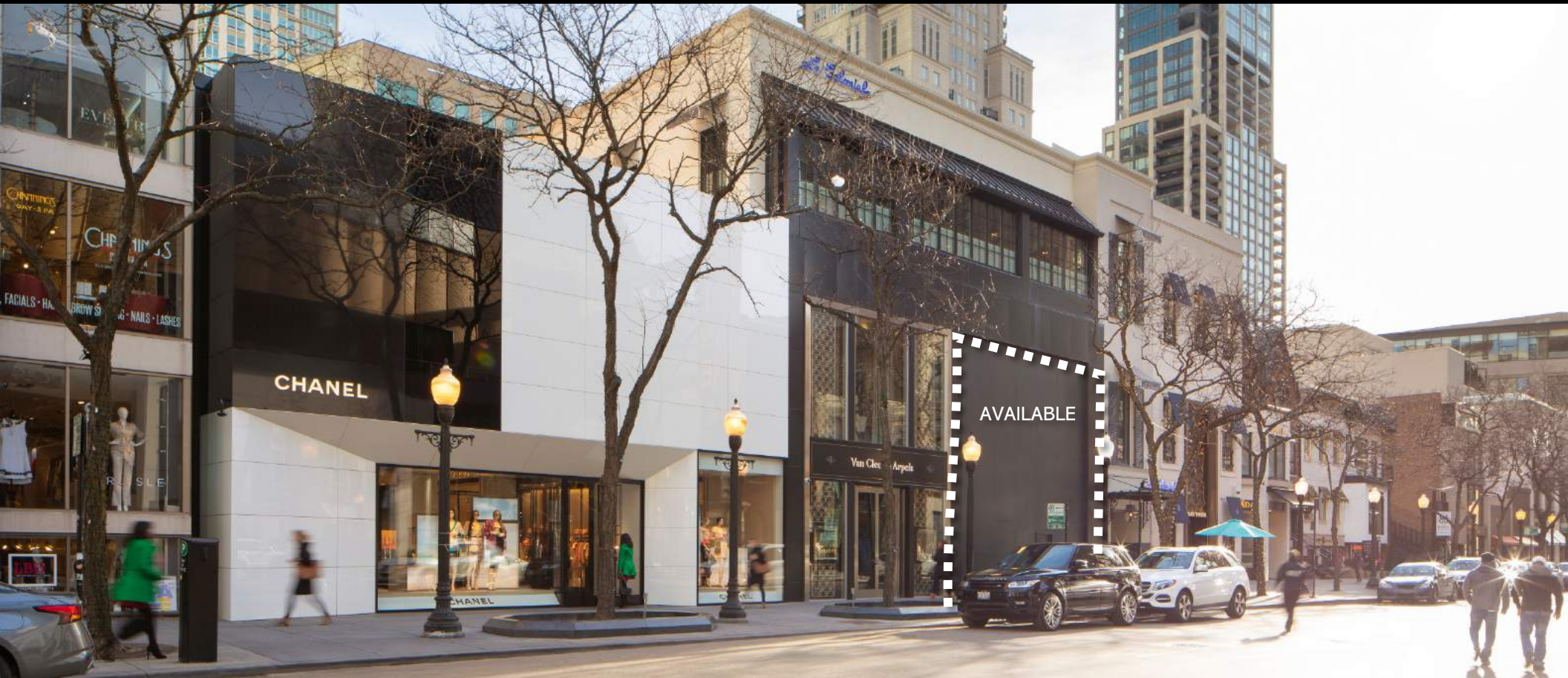


JOIN CHANEL • VAN CLEEF & ARPELS • LE COLONIAL



65 EAST OAK STREET, CHICAGO

CHICAGO'S PREMIERE
LUXURY SHOPPING DESTINATION

JENEL



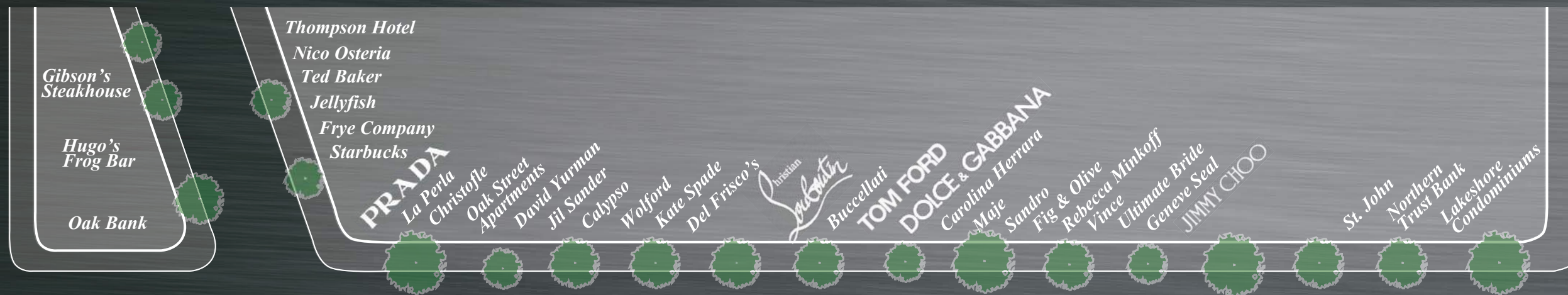




DESTINATION

NATIONAL & INTERNATIONAL EXPOSURE

- Year round tourism with an excess of 40 Million visitors annually
- Chicago is home to eleven Fortune 500 companies
- 15 Billionaires, 804 Multi-millionaires & 106,800 Millionaires
- A strong international presence with visitors from all over the world
- Chicago's O'Hare international is the busiest airport in the world by number of takeoffs and landings
- 28 CTA bus routes and 8 train routes serving 146 stations



Oak Street



OAK STREET

CHICAGO'S LUXURY SHOPPING DISTRICT

- Architecturally beautiful
- The preferred choice for boutiques and luxury consumers
- Surrounding restaurants: Gibson's, Fig & Olive, Le Colonial, Freds at Barney's, Polo Bar, Del Frisco, Tavern on Rush
- Oak Street has become one of the world's leading luxury capitals in fashion, beauty and spirits, according to a recent report by McKinsey & Company
- Surrounding hotels include: Waldorf Astoria, Four Seasons, The Peninsula, The Sofitel, Grand Hyatt
- A shift in luxury shops moving from Michigan Avenue to Oak Street
- Vibrant dining and nightlife



"FERRARIS on OAK" Summer Festival



PREMISES

A NEW HEIGHT OF LUXURY

57-65 East Oak Street represents an unprecedented retail opportunity located in the center of the luxury shopping corridor. The iconic property that spans approximately 108 feet on Oak & boasts over 31,992 sf over 4 levels. The new retail space offers tremendous ceiling height and magnificent signage opportunity. The sophisticated storefront design & finish is dictated by the client. The property is the latest commercial development to hit the market with state-of-the-art finishes.



PHOTOGRAPHS



GROUND FLOOR PLAN

SPACE NOTES:

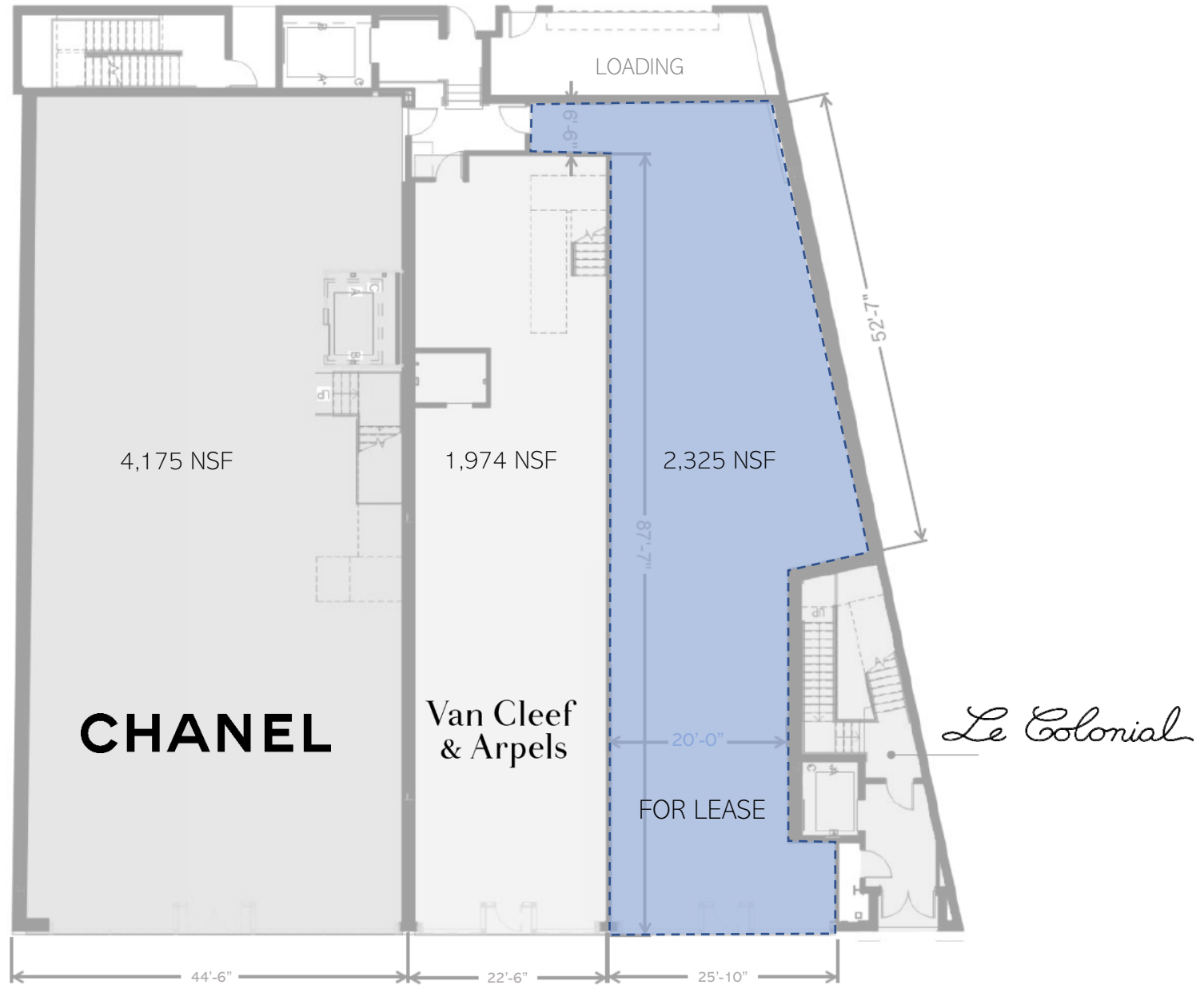
Space is divisible and ground floor can be leased separately to the 2nd floor.
Ground floor retail will contain a two-story story façade for tenant storefront signage.

Ground to 2nd Floor

Floor to Floor 14'-6"

Floor to Underside of Deck 14' 1-1/2"

Floor to Underside of Beams 11'-7 1/2" to 12'-10 1/2"



SECOND FLOOR PLAN

SPACE NOTES:

Space is divisible and ground floor can be leased separately to the 2nd floor.
Ground floor retail will contain a two-story story façade for tenant storefront signage.

2nd to 3rd Floor

Floor to Floor 17'-6"

Floor to Underside of Deck 17' 1-1/2"

Floor to Underside of Beams 14'-10 1/2" to 15'-1 1/2"

